



Locking in Quality around the World



Hotel Electric Lock : *M type (Separate)* <ANSI>

Handle & Color Variation

ANSI 156.25 test confirming it status as a "Grade 1" electronic mortise lock.



Type 476 Handle

- Zinc (ST)
- Zinc (SB)
- Zinc (BS)
- Zinc (BK)

Satin Chrome Finish (ST)
Key Override available as an option.



Type 66 Handle

- Stainless Steel (ST)
- Stainless Steel (SB)
- Brass (BS)
- Brass (BK)

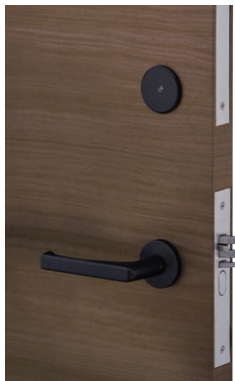
Polished Chrome Finish (SB)



Type 74 Handle

- Brass (ST)
- Brass (SB)
- Brass (BS)
- Brass (BK)

Satin Brass Finish (BS)



Type 50 Handle

- Stainless Steel (ST)
- Stainless Steel (SB)
- Brass (BS)
- Stainless Steel (BK)

Matt Black Finish (BK)



Type 478 Handle

- Zinc (ST)
- Zinc (BK)

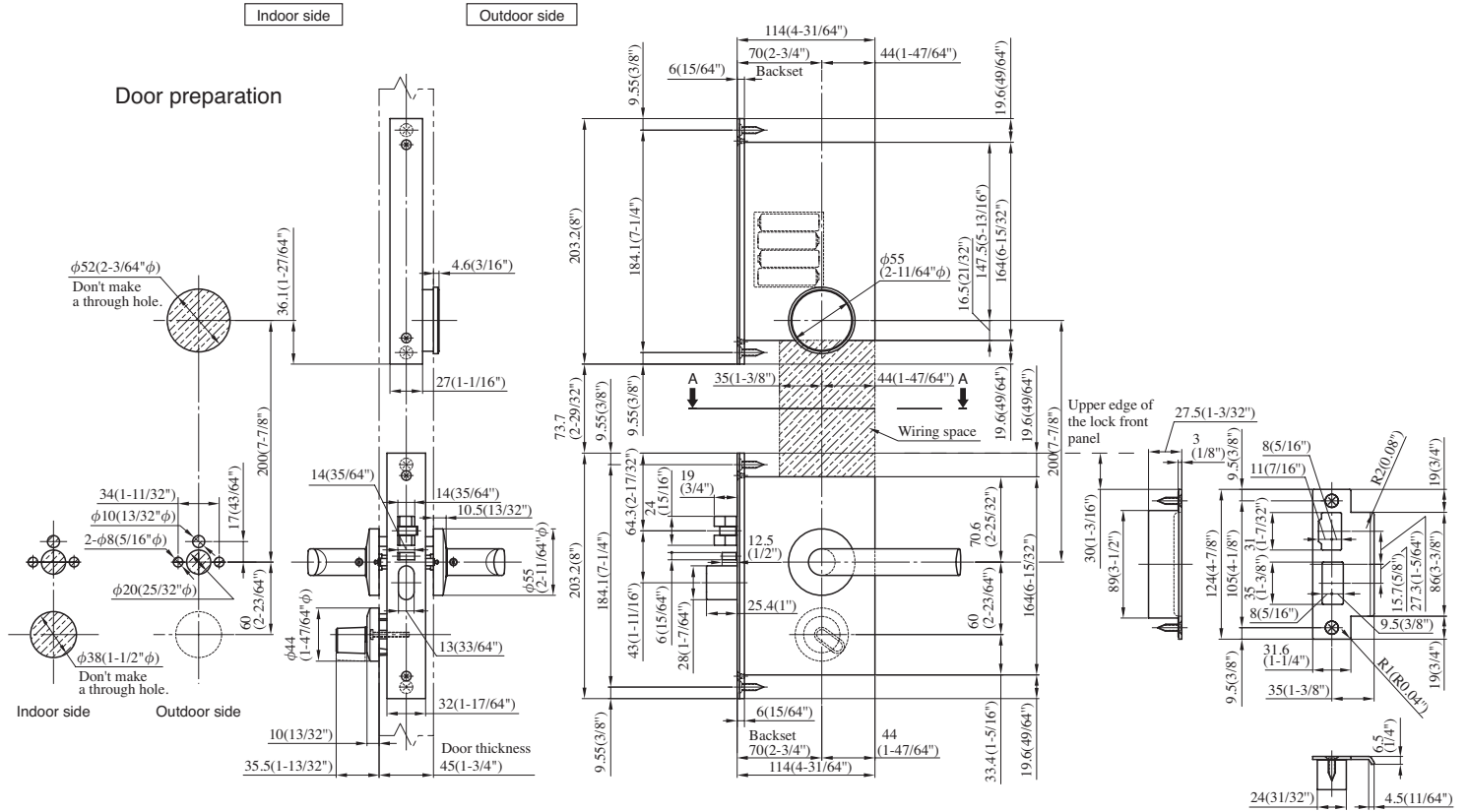
(Available in Oct 2023)

Matt Black Finish (BK)



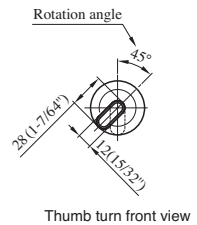
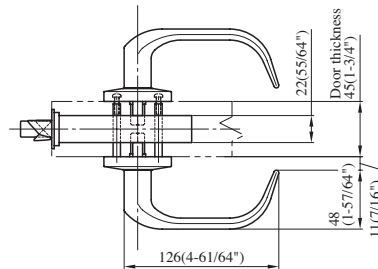
Inside design

Detail Drawing



Specifications

Handle type	50, 66, 74, 476, 478
Mountable Cylinder	U9
Backset	70 mm
Reader finish	Black color hard coated acrylic
Finishes	Satin Chrome (ST) / Polished Chrome (SB) Satin Brass (BS) / Polished Brass (YB) Mid Bronze (CB) / Matt Black (BK)
Door thickness	40-51 mm
Usability	Left-hand and right-hand usable (inward opening)
Power Supply	4 AA alkaline batteries
Mobile key	Available, BLE module is included
RFID standard	ISO 14443 A (MIFARE Plus / MIFARE Classic)
Supported door	Interior (Metal and Wood)
Audit Trail	Up to 600 events
BHMA / ANSI	Grade 1 certified
Fire Rating	UL10C certified



MIWA LOCK CO., LTD.

JAPAN 3-1-12, Shiba, Minato-ku, Tokyo 105-8510
URL: www.miwa-lock.biz

U.S.A. 9272 Jeronimo, Suite 119, Irvine CA 92618
URL: www.miwalock.com